

IN CASE OF FIRE

UPON DISCOVERY OF FIRE

LEAVE FIRE AREA IMMEDIATELY.
CLOSE DOORS.
SOUND THE FIRE ALARM.
PULL THE MANUAL STATION.
LEAVE THE BUILDING BY THE NEAREST EXIT.

CALL THE FIRE DEPARTMENT
DIAL **911**

DO NOT USE ELEVATORS UPON HEARING FIRE ALARM

LEAVE THE BUILDING BY THE NEAREST EXIT.
CLOSE DOORS BEHIND YOU.

CAUTION

IF SMOKE IS HEAVY IN THE CORRIDOR, IT
MAY BE SAFER TO STAY IN YOUR AREA.
CLOSE DOOR AND PLACE WET TOWEL AT
BASE OF DOOR.

IF YOU ENCOUNTER SMOKE IN THE
STAIRWAY, USE AN ALTERNATE EXIT.

REMAIN CALM

FALSE ALARM

* Everyone who willfully, without reasonable cause, in any
MANNER, makes or causes to be made an alarm of FIRE
is guilty of an offence. Criminal Code (Canada)

PROJECT:



87 BELLEVUE AVENUE
TORONTO, ONTARIO, M5T 2N8

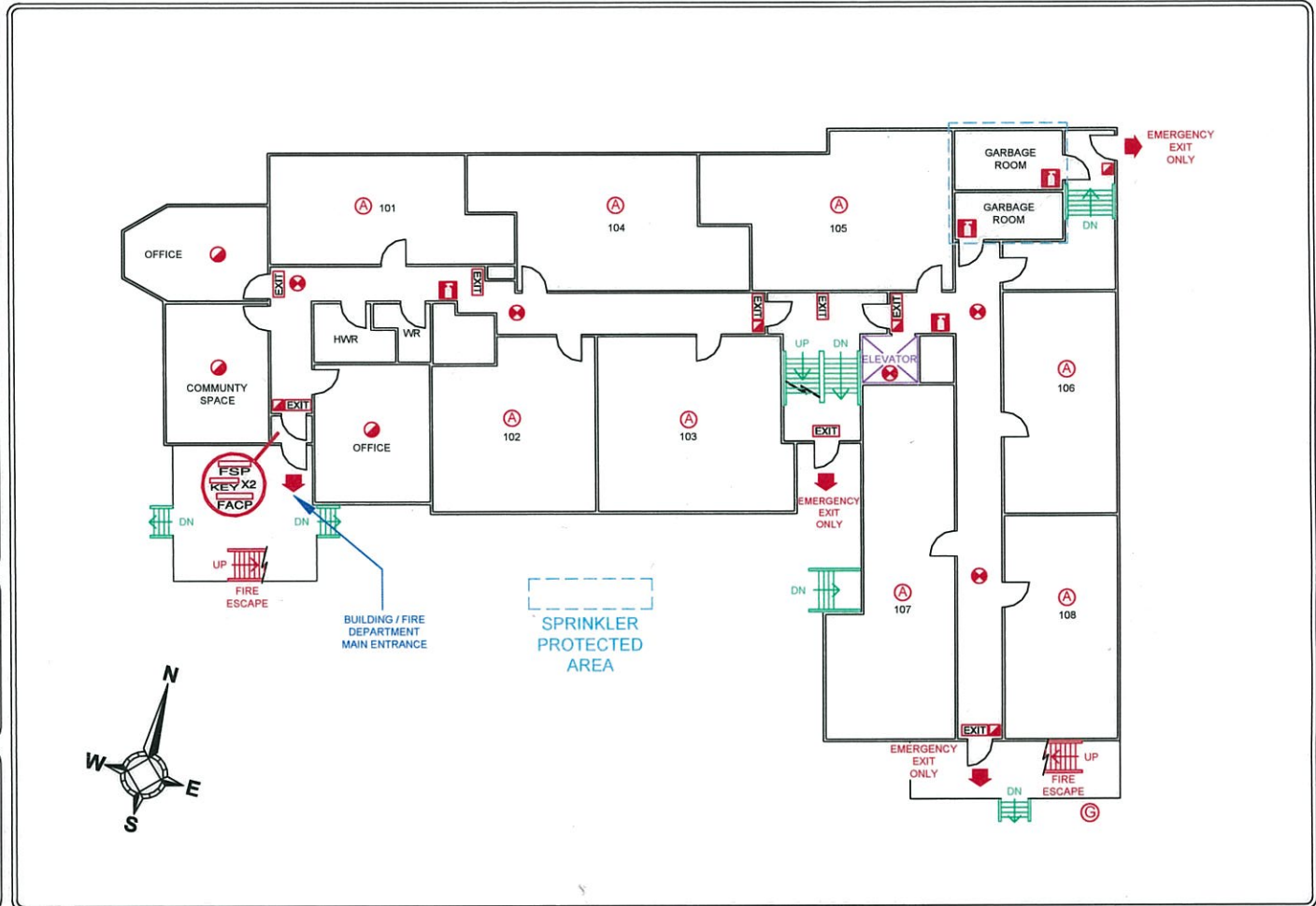
FIREPOINT

Fire Safety Plan Development

27 - 180 Wilkinson Road, Brampton ON L6T 4W8
PHONE: (905) 874-9400 FAX: (905) 874-9479
EMAIL: info@firepoint.ca WEB: www.firepoint.ca

COPYRIGHT © FIREPOINT INC.

Permission to be granted to create derivative schematics
or reproductions of this documents' contents



LEGEND

FIRE EXTINGUISHER	GAS SHUT OFF	HEAT DETECTOR
EXIT SIGN	FIRE ALARM CONTROL PANEL	SMOKE DETECTOR
FIRE SAFETY PLAN BOX	DIRECTION OF EGRESS	SMOKE ALARM
MANUAL PULL STATION	KEY	

TITLE: GROUND FLOOR PLAN

DRAWN: BT	SCALE: NOT TO SCALE	PROJECT NO: 13891
PROJECT DATE: OCTOBER 31, 2016	DWG REVISION FEEDBACK: YES	
REVISION DATE: NOVEMBER 2, 2016	DRAWING NO: 3	
APPROVED DATE: MARCH 10, 2017	OF 5	