

IN CASE OF FIRE

UPON DISCOVERY OF FIRE

LEAVE FIRE AREA IMMEDIATELY.
CLOSE DOORS.
SOUND THE FIRE ALARM.
PULL THE MANUAL STATION.
LEAVE THE BUILDING BY THE NEAREST EXIT.

CALL THE FIRE DEPARTMENT
DIAL **911**

DO NOT USE ELEVATORS

UPON HEARING FIRE ALARM

LEAVE THE BUILDING BY THE NEAREST EXIT.
CLOSE DOORS BEHIND YOU.

CAUTION

IF SMOKE IS HEAVY IN THE CORRIDOR, IT
MAY BE SAFER TO STAY IN YOUR AREA.
CLOSE DOOR AND PLACE WET TOWEL AT
BASE OF DOOR.

IF YOU ENCOUNTER SMOKE IN THE
STAIRWAY, USE AN ALTERNATE EXIT.

REMAIN CALM

FALSE ALARM

* Everyone who willfully, without reasonable cause, in any
MANNER, makes or causes to be made an alarm of FIRE
is guilty of an offence. Criminal Code (Canada)

PROJECT:



Everyone needs a home

702 KENNEDY ROAD
TORONTO, ONTARIO, M1K 2B5

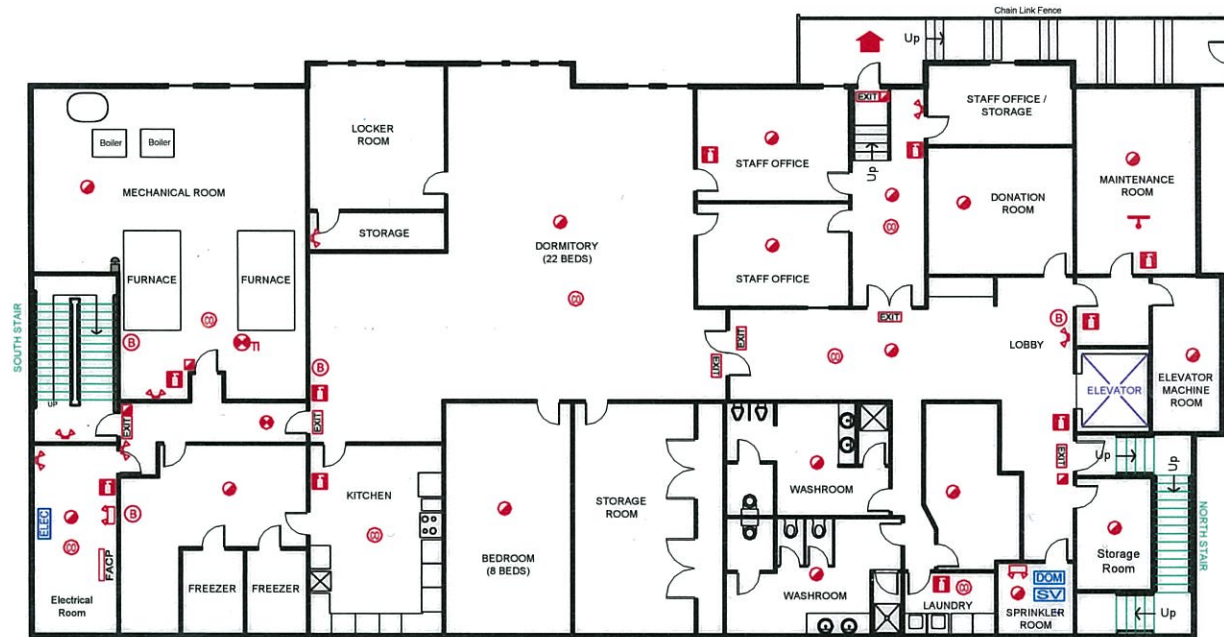
FIREPOINT

Fire Safety Plan Development

27 - 180 Wilkinson Road, Brampton ON L6T 4W8
PHONE: (905) 874-9400 FAX: (905) 874-9479
EMAIL: info@firepoint.ca WEB: www.firepoint.ca

COPYRIGHT © FIREPOINT INC.

Permission to be granted to create derivative schematics
or reproductions of this document's contents



LEGEND

	DUCT SMOKE DETECTOR		FIRE ALARM BELL		CARBON MONOXIDE DETECTOR		SPRINKLERED AREA
	MANUAL PULL STATION		EMERGENCY LIGHT WITH BATTERY PACK		MAIN ELECTRICAL DISCONNECT		FIRE ALARM CONTROL PANEL
	FIRE EXTINGUISHER		HEAT DETECTOR		DOMESTIC WATER SHUTOFF		DIRECTION OF EGRESS
	EXIT SIGN		EMERGENCY LIGHT REMOTE UNIT		SPRINKLER SHUTOFF VALVES		

TITLE: BASEMENT FLOOR PLAN

DRAWN: PC	SCALE: NOT TO SCALE	PROJECT NO: 13921
PROJECT DATE: FEBRUARY 6, 2018	DWG REWORK PERMISSION: SCHEMATIC RE-DRAWN	
REVISION DATE:	DRAWING NO:	
APPROVED DATE: JULY 6, 2018		

OF 4