

## IN CASE OF FIRE

### UPON DISCOVERY OF FIRE

LEAVE FIRE AREA IMMEDIATELY.  
CLOSE DOORS.  
SOUND THE FIRE ALARM.  
PULL THE MANUAL STATION.  
LEAVE THE BUILDING BY THE NEAREST EXIT.

CALL THE FIRE DEPARTMENT  
DIAL **911**

### DO NOT USE ELEVATORS

### UPON HEARING FIRE ALARM

LEAVE THE BUILDING BY THE NEAREST EXIT.  
CLOSE DOORS BEHIND YOU.

### CAUTION

IF SMOKE IS HEAVY IN THE CORRIDOR, IT  
MAY BE SAFER TO STAY IN YOUR AREA.  
CLOSE DOOR AND PLACE WET TOWEL AT  
BASE OF DOOR.

IF YOU ENCOUNTER SMOKE IN THE  
STAIRWAY, USE AN ALTERNATE EXIT.

## REMAIN CALM

**FALSE ALARM**  
\* Everyone who willfully, without reasonable cause, in any  
MANNER, makes or causes to be made an alarm of FIRE  
is Guilty of an offence \* Criminal Code (Canada)

PROJECT:



Everyone needs a home

702 KENNEDY ROAD  
TORONTO, ONTARIO, M1K 2B5

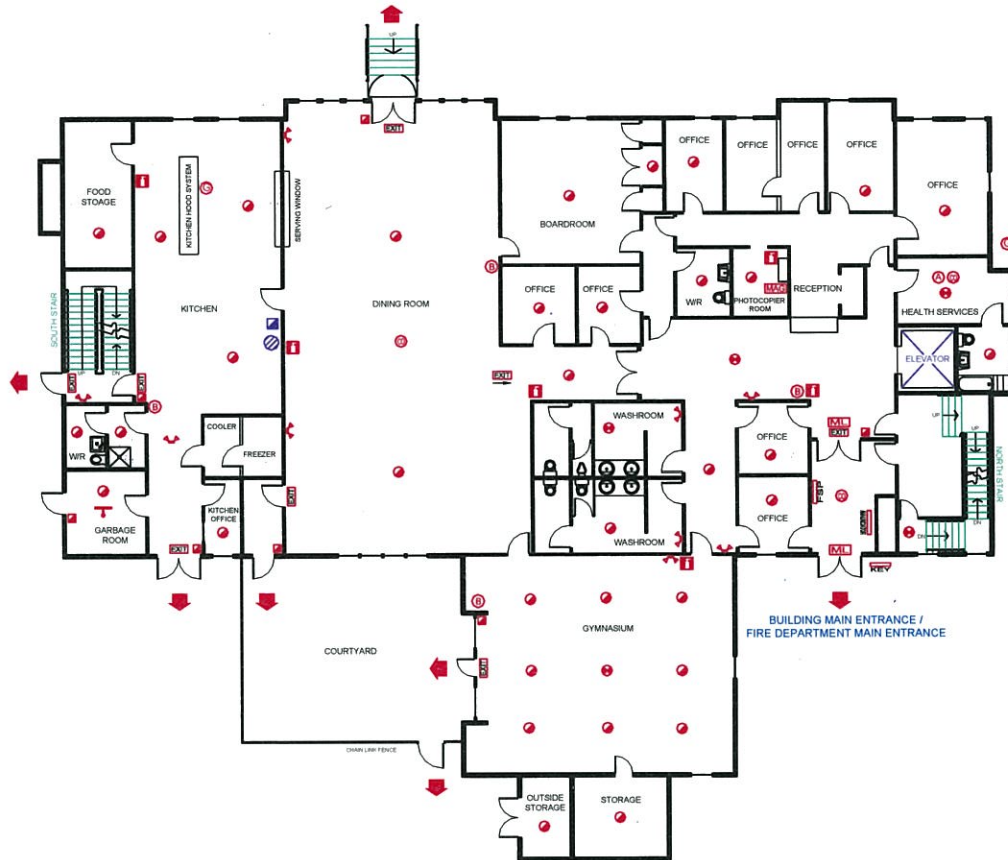
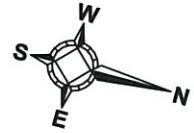
## FIREPOINT

Fire Safety Plan Development

27 - 180 Wilkinson Road, Brampton ON L6T 4W8  
PHONE: (905) 874-9400 FAX: (905) 874-9479  
EMAIL: info@firepoint.ca WEB: www.firepoint.ca

COPYRIGHT © FIREPOINT INC.

Permission to be granted to create derivative schematics  
or reproductions of this document's contents



<b>ML</b>	MAG LOCKED DOOR	<b>SD</b>	SMOKE DETECTOR	<b>MPS</b>	MANUAL PULL STATION	<b>F</b>	FIRE EXTINGUISHER	<b>EXIT</b>	EXIT SIGN
-----------	-----------------	-----------	----------------	------------	---------------------	----------	-------------------	-------------	-----------

<b>MAG</b>	MAGLOCK KEY RELEASE	<b>B</b>	FIRE ALARM BELL	<b>KHSS</b>	KITCHEN HOOD SUPPRESSION SYSTEM	<b>HD</b>	HEAT DETECTOR	<b>ELR</b>	EMERGENCY LIGHT REMOTE UNIT
------------	---------------------	----------	-----------------	-------------	---------------------------------	-----------	---------------	------------	-----------------------------

#### LEGEND

<b>CO</b>	CARBON MONOXIDE DETECTOR	<b>ELEC</b>	MAIN ELECTRICAL DISCONNECT
<b>DWS</b>	DOMESTIC WATER SHUTOFF	<b>SV</b>	SPRINKLER SHUTOFF VALVES

<b>KEY</b>	EMERGENCY KEY BOX	<b>FSP</b>	FIRE SAFETY PLAN BOX
<b>DE</b>	DIRECTION OF EGRESS	<b>GS</b>	GAS SHUT OFF

<b>A</b>	SMOKE ALARM	<b>FAPP</b>	FIRE ALARM ANNUCIATOR PANEL
<b>MPS</b>	MANUAL PULL STATION FOR KITCHEN SYSTEM	<b>KSC</b>	KITCHEN SYSTEM CYLINDER

#### TITLE: GROUND FLOOR PLAN

DRAWN: PC	SCALE: NOT TO SCALE	PROJECT NO: 13921
PROJECT DATE: FEBRUARY 6, 2018	DWG REMARK PERMISSION: SCHEMATIC RE-DRAWN	DRAWING NO: 3 OF 4
REVISION DATE:	APPROVED DATE: JULY 6, 2018	