

IN CASE OF FIRE

UPON DISCOVERY OF FIRE

LEAVE FIRE AREA IMMEDIATELY.
CLOSE DOORS.
SOUND THE FIRE ALARM.
PULL THE MANUAL STATION.
LEAVE THE BUILDING BY THE NEAREST EXIT.

CALL THE FIRE DEPARTMENT
DIAL **911**

DO NOT USE ELEVATORS

UPON HEARING FIRE ALARM

LEAVE THE BUILDING BY THE NEAREST EXIT.
CLOSE DOORS BEHIND YOU.

CAUTION

IF SMOKE IS HEAVY IN THE CORRIDOR, IT
MAY BE SAFER TO STAY IN YOUR AREA.
CLOSE DOOR AND PLACE WET TOWEL AT
BASE OF DOOR.

IF YOU ENCOUNTER SMOKE IN THE
STAIRWAY, USE AN ALTERNATE EXIT.

REMAIN CALM

FALSE ALARM

* Everyone who willfully, without reasonable cause, in any
MANNER, makes or causes to be made an alarm of FIRE
is guilty of an offence.* Criminal Code (Canada)

PROJECT:



Everyone needs a home

702 KENNEDY ROAD
TORONTO, ONTARIO, M1K 2B5

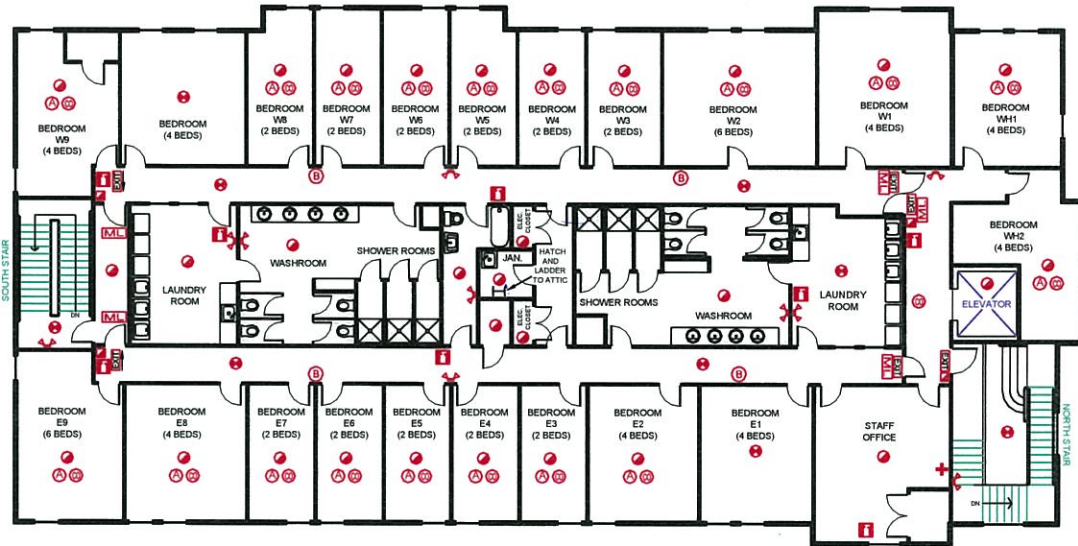
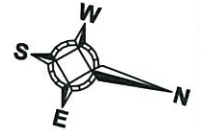
FIREPOINT

Fire Safety Plan Development

27 - 180 Wilkinson Road, Brampton ON L6T 4W8
PHONE: (905) 874-9400 FAX: (905) 874-9479
EMAIL: info@firepoint.ca WEB: www.firepoint.ca

COPYRIGHT © FIREPOINT INC.

Permission is granted to create derivative schematics
or reproductions of this document's contents



LEGEND

- | | | |
|---------------------|-----------------------------|--------------------------|
| SMOKE DETECTOR | FIRE ALARM BELL | CARBON MONOXIDE DETECTOR |
| MANUAL PULL STATION | MAG LOCKED DOOR | SMOKE ALARM |
| FIRE EXTINGUISHER | HEAT DETECTOR | |
| EXIT SIGN | EMERGENCY LIGHT REMOTE UNIT | |

TITLE: SECOND FLOOR PLAN

DRAWN: PC	SCALE: NOT TO SCALE	PROJECT NO: 13921
PROJECT DATE: FEBRUARY 6, 2018	DWG REWORK PERMISSION: SCHEMATIC RE-DRAWN	
REVISION DATE:	DRAWING NO: 4	
APPROVED DATE: JULY 6, 2018	4 OF 4	