

IN CASE OF FIRE

UPON DISCOVERY OF FIRE

LEAVE FIRE AREA IMMEDIATELY.
CLOSE DOORS.
SOUND THE FIRE ALARM.
PULL THE MANUAL STATION.
LEAVE THE BUILDING BY THE NEAREST EXIT.

CALL THE FIRE DEPARTMENT
DIAL **911**
(FROM A SAFE LOCATION)

UPON HEARING FIRE ALARM

LEAVE THE BUILDING BY THE NEAREST EXIT.
CLOSE DOORS BEHIND YOU.

CAUTION

IF SMOKE IS HEAVY IN THE CORRIDOR, IT
MAY BE SAFER TO STAY IN YOUR AREA.
CLOSE DOOR AND PLACE WET TOWEL AT
BASE OF DOOR.

IF YOU ENCOUNTER SMOKE IN THE
STAIRWAY, USE AN ALTERNATE EXIT.

REMAIN CALM

FALSE ALARM

* Everyone who willfully, without reasonable cause, in any
MANNER, makes or causes to be made an alarm of FIRE
is guilty of an offence." Criminal Code (Canada)

PROJECT:



1322 BLOOR STREET WEST
TORONTO, ONTARIO, M6H 1P2

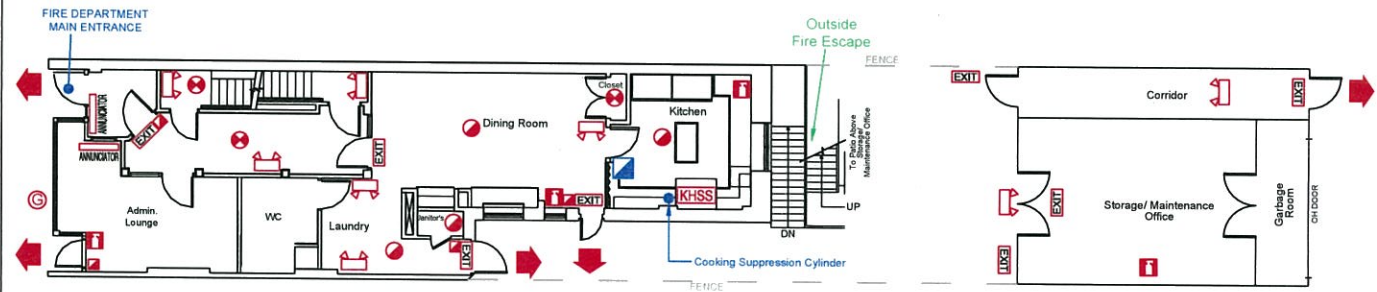
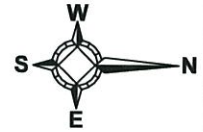
FIREPOINT

Fire Safety Plan Development

27 - 180 Wilkinson Road, Brampton ON L6T 4W8
PHONE: (905) 874-9400 FAX: (905) 874-9479
EMAIL: info@firepoint.ca WEB: www.firepoint.ca

COPYRIGHT © FIREPOINT INC.

Permission to be granted to create derivative schematics
or reproductions of this documents' contents



LEGEND

FIRE ALARM ANNUNCIATOR
PANEL
 HEAT DETECTOR
 SMOKE DETECTOR

FIRE EXTINGUISHER
 MANUAL PULL STATION
 EMERGENCY LIGHTING

EXIT EXIT SIGN
 KHSS KITCHEN HOOD SUPPRESSION
SYSTEM
 MANUAL PULL STATION
FOR KITCHEN SYSTEM

GAS SHUT-OFF

TITLE: GROUND FLOOR PLAN			
DRAWN: AA	SCALE: NOT TO SCALE	PROJECT NO: 13209R1	
PROJECT DATE: JULY 15, 2014		DRAWING NO:	
REVISION DATE: SEPTEMBER 10, 2014			
FD APPROVED DATE: SEPTEMBER 26, 2014			

3
OF 5