

## IN CASE OF FIRE

### UPON DISCOVERY OF FIRE

LEAVE FIRE AREA IMMEDIATELY.  
CLOSE DOORS.  
SOUND THE FIRE ALARM.  
PULL THE MANUAL STATION.  
LEAVE THE BUILDING BY THE NEAREST EXIT.

CALL THE FIRE DEPARTMENT  
DIAL **911**

### UPON HEARING FIRE ALARM

LEAVE THE BUILDING BY THE NEAREST EXIT.  
CLOSE DOORS BEHIND YOU.

### CAUTION

IF SMOKE IS HEAVY IN THE CORRIDOR, IT  
MAY BE SAFER TO STAY IN YOUR AREA.  
CLOSE DOOR AND PLACE WET TOWEL AT  
BASE OF DOOR.

IF YOU ENCOUNTER SMOKE IN THE  
STAIRWAY, USE AN ALTERNATE EXIT.

## REMAIN CALM

### FALSE ALARM

\*Everyone who willfully, without reasonable cause, in any  
MANNER, makes or causes to be made an alarm of FIRE  
is guilty of an offence. Criminal Code (Canada)

PROJECT:



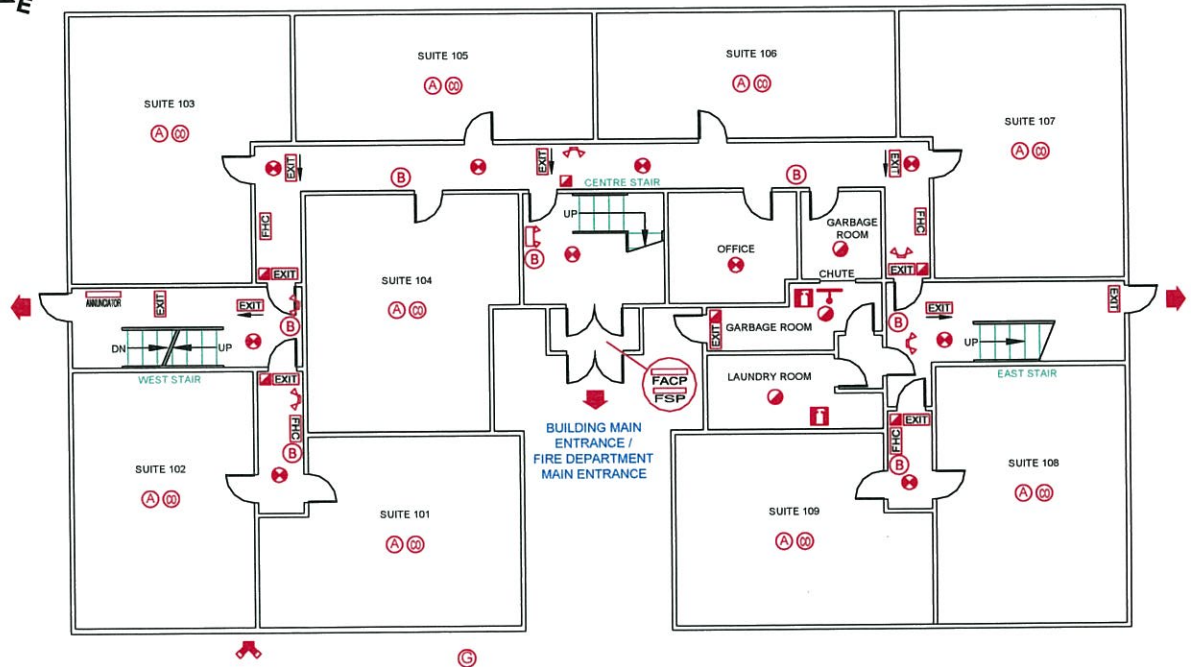
175 VAUGHAN ROAD  
YORK, ONTARIO, M6C 2M4

## FIREPOINT

Fire Safety Plan Development

27 - 180 Wilkinson Road, Brampton ON L6T 4W8  
PHONE: (905) 874-9400 FAX: (905) 874-9479  
EMAIL: info@firepoint.ca WEB: www.firepoint.ca

COPYRIGHT © FIREPOINT INC.  
Permission to be granted to create derivative schematics  
or reproductions of this documents' contents



### LEGEND

	FIRE EXTINGUISHER		FIRE HOSE CABINET WITH FIRE EXTINGUISHER		FIRE DEPARTMENT CONNECTION		FIRE SAFETY PLAN BOX		CARBON MONOXIDE DETECTOR(120V AC)
	EXIT SIGN		FIRE ALARM BELL		GAS SHUT OFF		FIRE ALARM CONTROL PANEL		SPRINKLERED AREA
	EMERGENCY LIGHT WITH BATTERY PACK		HEAT DETECTOR		MANUAL PULL STATION		FIRE ALARM ANNUNCIATOR PANEL		
	EMERGENCY LIGHT REMOTE UNIT		SMOKE DETECTOR		DIRECTION OF EGRESS		SMOKE ALARM (120V AC)		

### TITLE: GROUND FLOOR PLAN

DRAWN: JR	SCALE: NOT TO SCALE	PROJECT NO: 14082
PROJECT DATE: NOVEMBER 6, 2018	DWG. REVIEW PERMISSION: SCHEMATIC RE-DRAWN	
REVISION DATE:	DRAWING NO: 3 OF 6	
APPROVED DATE: JANUARY 9, 2019		